

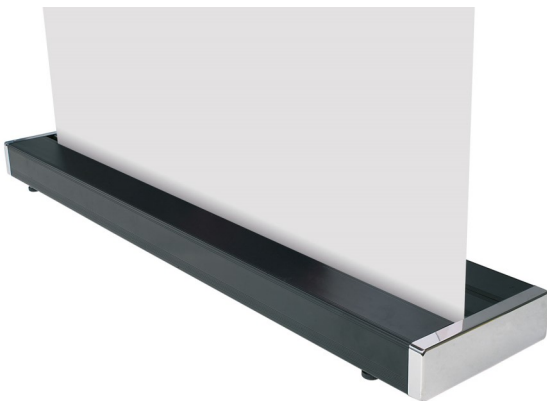
TREND ROLLER BANNER

FEATURES AND BENEFITS

The Trend roller banner speaks for itself in any situation. A perfect choice for the design conscious, its distinguished good looks make a strong statement about your company's style credentials.

Accompanying the Trend roller banner's chic appearance is a raft of practical features for premium performance, too - the razor sharp lines of the streamlined base give it a low centre of gravity, while adjustable feet provided added stability on uneven floors. Chrome magnetic end caps offer convenient access for optimal tensioning while a robust bungee pole and snap clip top rail add simple assembly to this sophisticated roller banner's appeal.

Supplied in a premium carry bag, the Trend comes in 850mm width and is suitable for use in any exhibition setting but especially suited to elite events and industries.



PRODUCT DETAILS		HARDWARE SPECIFICATIONS		GRAPHIC SPECIFICATIONS
Description	Order Code	Dimensions (mm)	Weight (kg)	Dimensions (mm) - + 200mm to allow for roller
Trend 850	INE183358	2000mm x 850mm	6.00	2000 (+200) x 850

NOTE: We recommend that no text is printed within 50mm of the top and bottom of the graphic. Please add 200mm to the graphic length to allow for the roller.

We operate a policy of continuous improvement and we reserve the right to alter products and specifications to reflect this without prior notice. Any information given either verbally or in writing is approximate only and given in good faith and does not constitute terms or part of any contract. We do not accept liability for variance including direct, indirect or consequential loss. The customer is deemed to have determined the suitability of the product for the use intended and assumes all associated risks and liabilities in connection with specifying, using or being unable to use any of the products.